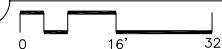


FUTURE FERRY DOCK BY OTHERS

W V U T S R Q P N M L K J H G F E D C B A

SAN FRANCISCO BAY

1 PARTIAL FIRST FLOOR PLAN - CRANEWAY



FOR 5,000 PERSON OCCUPANCY
 PLUMBING FIXTURES REQUIRED
 = 5,000/50 = 100
 PROVIDED: 20 BUILT-IN + 80 PORTA-POTTIES

CRANEWAY AREA: $40,000 + (175 \times 25) = 44,375$ SQ. FT.
 STAGE AREA:
 (3 @ 20' X 40') = 2400 SQ. FT.
 REMAINING SQ. FT. (CRANEWAY LESS STAGE) = 41,975 SQ. FT.

FORD ASSEMBLY BUILDING

1414 HARBOUR WAY SOUTH
 RICHMOND, CALIFORNIA 94804

Developer:

Orton
 Development, Inc.

3049 Research Dr.
 Richmond, CA 94806
 tel: (510) 428-0800

Architect:

MARCY WONG
 & DONN LOGAN
 ARCHITECTS

816 Bancroft Way
 Berkeley, CA 94710
 tel: (510) 843-0916

Consultant:

Stamp:

Revisions:

Sheet Name:

STAGE 1 PLAN
 CRANEWAY WITH CENTER STAGE

Phase:

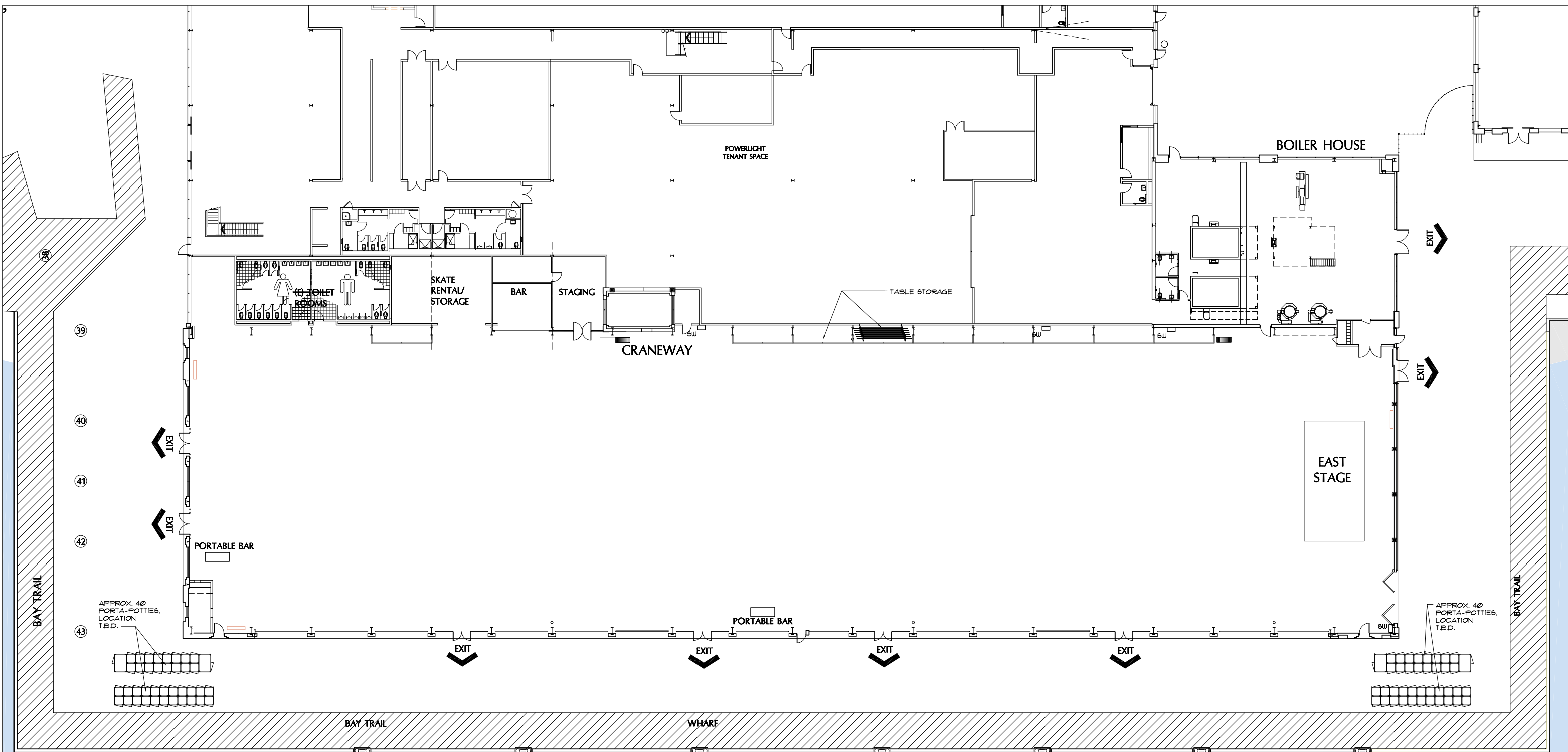
Date: 16 SEPT, 2008

By: KR, KS, JT

Sheet Number:

STAGE

1



FUTURE FERRY DOCK
BY OTHERS

W V U T S R Q P N M L K J I H G F E D C B A

SAN FRANCISCO BAY

1 PARTIAL FIRST FLOOR PLAN - CRANEWAY



FOR 5,000 PERSON OCCUPANCY
PLUMBING FIXTURES REQUIRED
= 5,000/50 = 100
PROVIDED: 20 BUILT-IN + 80 PORTA-POTTIES

CRANEWAY AREA: 40,000 + (175X25) = 44,375 SQ. FT.
STAGE AREA: (1 @ 20'X40') = 800 SQ. FT.
REMAINING SQ. FT. (CRANEWAY LESS STAGE) = 43,575 SQ. FT.

FORD ASSEMBLY BUILDING

1414 HARBOUR WAY SOUTH
RICHMOND, CALIFORNIA 94804

Developer:
Orton
Development, Inc.
3049 Research Dr.
Richmond, CA 94806
tel: (510) 428-0800

Architect:
MARCY WONG
& DONN LOGAN
ARCHITECTS
816 Bancroft Way
Berkeley, CA 94710
tel: (510) 843-0916

Consultant:

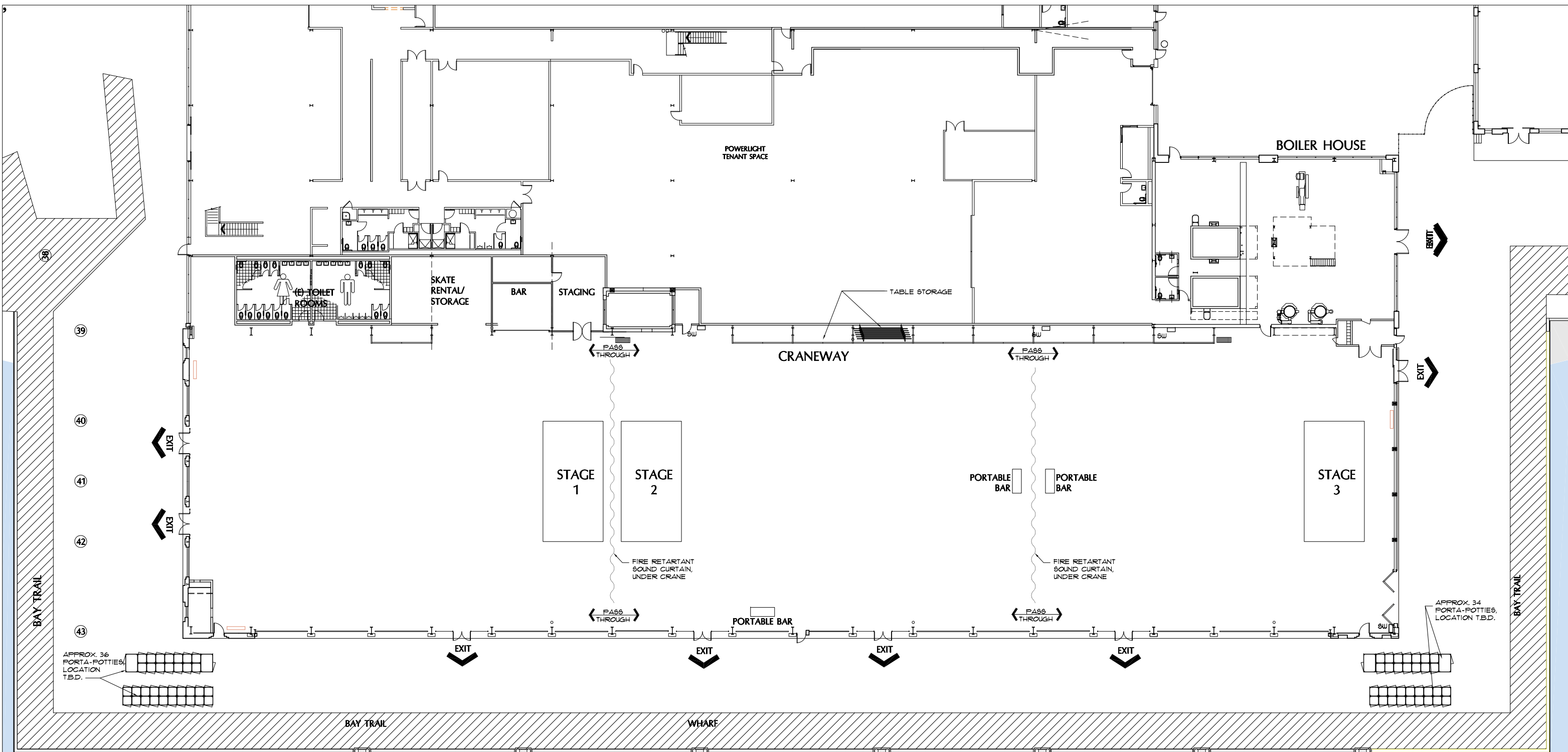
Stamp:

Revisions:

Sheet Name:
**STAGE 2 PLAN
CRANEWAY WITH EAST STAGE**

Phase:
Date: 16 SEPT, 2008
By: KR, KS, JT

Sheet Number:
**STAGE
2**



APPROX. 36 PORTA-POTTIES, LOCATION T.B.D.

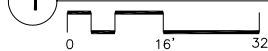
APPROX. 34 PORTA-POTTIES, LOCATION T.B.D.

FUTURE FERRY DOCK BY OTHERS

W V U T S R Q P N M L K J H G F E D C B A

SAN FRANCISCO BAY

1 PARTIAL FIRST FLOOR PLAN - CRANEWAY



FOR 4,500 PERSON OCCUPANCY
 PLUMBING FIXTURES REQUIRED
 = 4,500/50 = 90
 PROVIDED: 20 BUILT-IN + 70 PORTA-POTTIES

CRANEWAY AREA: 40,000 + (175x25) = 44,375 SQ. FT.
 STAGE AREA: (3 @ 20'x40') = 2400 SQ. FT.
 REMAINING SQ. FT. (CRANEWAY LESS STAGE) = 41,975 SQ. FT.

FORD ASSEMBLY BUILDING

1414 HARBOUR WAY SOUTH
 RICHMOND, CALIFORNIA 94804

Developer:
Orton
 Development, Inc.
 3049 Research Dr.
 Richmond, CA 94806
 tel: (510) 428-0800

Architect:
 MARCY WONG
 & DONN LOGAN
 ARCHITECTS
 816 Bancroft Way
 Berkeley, CA 94710
 tel: (510) 843-0916

Consultant:

Stamp:

Revisions:

Sheet Name:
STAGE 3 PLAN
CRANEWAY WITH THREE STAGES

Phase:
 Date: 16 SEPT, 2008
 By: KR, KS, JT

Sheet Number:
STAGE
3